



2014 TSSAA DI & DII State Bowling Team Tournament



Oil Pattern Distance:	42 Feet	Reverse Brush Drop:	36 Feet	Oil Per Board:	50 uL
Forward Oil Total:	15.25 mL	Reverse Oil Total:	9.65 mL	Volume Oil Total:	24.9 mL
Forward Boards Crossed:	305 Boards	Reverse Boards Crossed:	193 Boards	Total Boards Crossed:	498 Boards

	Start	Stop	Loads	Speed	Crossed	Start	End	Feet	T.Oil
1	2L	2R	5	18	185	0.0	10.2	10.2	9250
2	8L	8R	1	18	25	10.2	12.7	2.5	1250
3	9L	9R	1	18	23	12.7	15.2	2.5	1150
4	10L	10R	1	18	21	15.2	17.7	2.5	1050
5	11L	11R	1	18	19	17.7	20.2	2.5	950
6	12L	12R	1	22	17	20.2	23.3	3.1	850
7	13L	13R	1	22	15	23.3	26.4	3.1	750
8	2L	2R	0	22	0	26.4	42.0	15.6	0

Navigation: Forward Reverse More

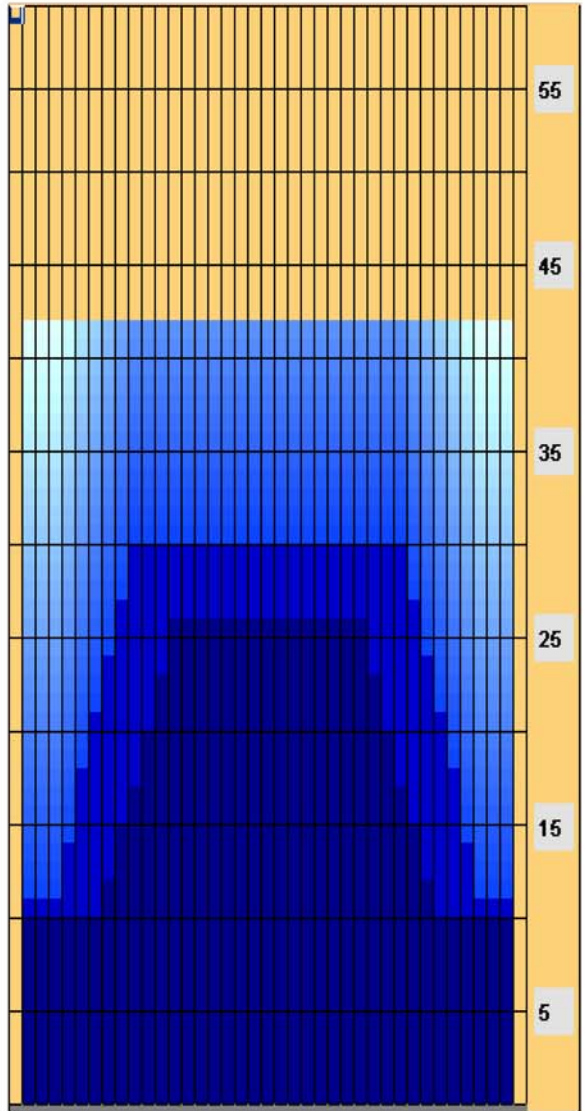
	Start	Stop	Loads	Speed	Crossed	Start	End	Feet	T.Oil
1	2L	2R	0	22	0	42.0	30.0	-12.0	0
2	10L	10R	1	22	21	30.0	26.9	-3.1	1050
3	9L	9R	1	22	23	26.9	23.8	-3.1	1150
4	8L	8R	1	22	25	23.8	20.7	-3.1	1250
5	7L	7R	1	22	27	20.7	17.6	-3.1	1350
6	6L	6R	1	22	29	17.6	14.5	-3.1	1450
7	5L	5R	1	22	31	14.5	11.4	-3.1	1550
8	2L	2R	1	22	37	11.4	8.3	-3.1	1850
9	2L	2R	0	18	0	8.3	0.0	-8.3	0

Navigation: Forward Reverse More

Conditioner:
Infinity

TransferType:
Transfer Brush

Forward
Reverse
Combined
Buff



Item	3L-7L:18L-18R	8L-12L:18L-18R	13L-17L:18L-18R	18L-18R:17R-13R	18L-18R:12R-8R	18L-18R:7R-3R
Description	Outside Track:Middle	Middle Track:Middle	Inside Track:Middle	Middle: Inside Track	Middle:Middle Track	Middle:Outside Track
Track Zone Ratio	2.5	1.25	1	1	1.25	2.5

