

2013 TSSAA DI & DII Individual State Semifinal & Finals



Oil Pattern Distance: 33 Feet **Reverse Brush Drop:** 26 Feet **Oil Per Board:** 50 uL
Forward Oil Total: 16.5 mL **Reverse Oil Total:** 8.3 mL **Volume Oil Total:** 24.8 mL
Forward Boards Crossed: 330 Boards **Reverse Boards Crossed:** 166 Boards **Total Boards Crossed:** 496 Boards

	Start	Stop	Loads	Speed	Crossed	Start	End	Feet	T.Oil
1	2L	2R	4	10	148	0.0	4.2	4.2	7400
2	4L	3R	1	14	34	4.2	6.1	1.9	1700
3	5L	4R	1	18	32	6.1	8.6	2.5	1600
4	6L	5R	2	18	60	8.6	13.7	5.1	3000
5	7L	6R	2	18	56	13.7	18.8	5.1	2800
6	2L	2R	0	22	0	18.8	25.0	6.2	0
7	2L	2R	0	26	0	25.0	33.0	8.0	0

Navigation: Forward Reverse More

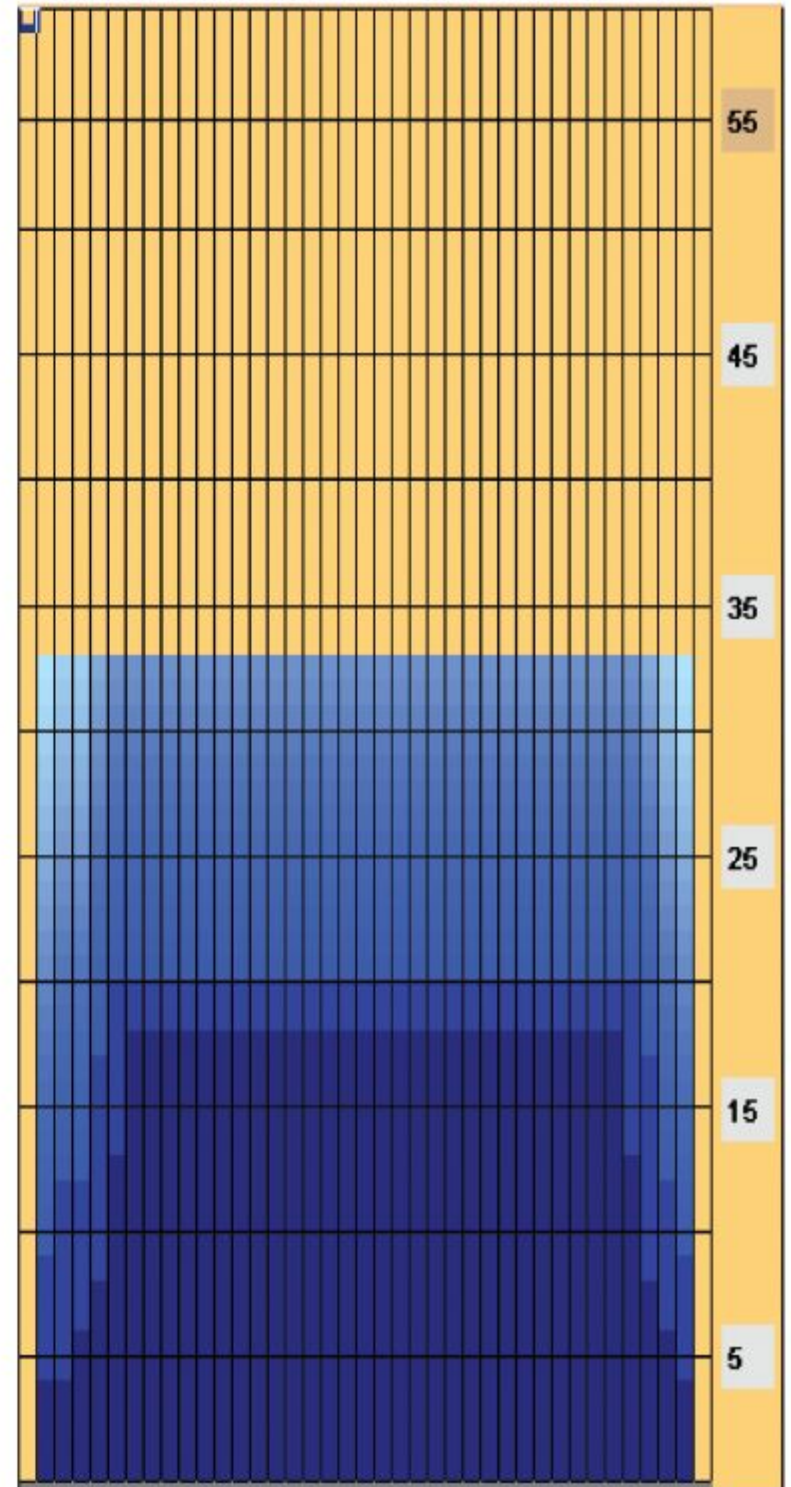
	Start	Stop	Loads	Speed	Crossed	Start	End	Feet	T.Oil
1	2L	2R	0	30	0	33.0	20.0	-13.0	0
2	6L	5R	1	22	30	20.0	16.9	-3.1	1500
3	5L	4R	2	18	64	16.9	11.8	-5.1	3200
4	3L	3R	1	18	35	11.8	9.3	-2.5	1750
5	2L	2R	1	14	37	9.3	7.4	-1.9	1850
6	2L	2R	0	14	0	7.4	0.0	-7.4	0

Navigation: Forward Reverse More

Conditioner:
Kegel

TransferType:
Transfer Brush

- Forward
- Reverse
- Combined
- Buff



Item	3L-7L:18L-18R	8L-12L:18L-18R	13L-17L:18L-18R	18L-18R:17R-13R	18L-18R:12R-8R	18L-18R:7R-3R
Description	Outside Track:Middle	Middle Track:Middle	Inside Track:Middle	Middle: Inside Track	Middle:Middle Track	Middle:Outside Track
Track Zone Ratio	1.47	1	1	1	1	1.25

