

# OHSAA 2023 State Championships



**Oil Pattern Distance:** 41 Feet      **Reverse Brush Drop:** 41 Feet      **Oil Per Board:** 50 uL  
**Forward Oil Total:** 12.75 mL      **Reverse Oil Total:** 12.7 mL      **Volume Oil Total:** 25.45 mL  
**Forward Boards Crossed:** 255 Boards      **Reverse Boards Crossed:** 254 Boards      **Total Boards Crossed:** 509 Boards

Start	Stop	Loads	Speed	Crossed	Start	End	Feet	T.Oil
1	2L 2R	3	14	111	0.0	3.9	3.9	5550
2	11L 11R	4	18	76	3.9	14.1	10.2	3800
3	12L 12R	4	22	68	14.1	26.5	12.4	3400
4	2L 2R	0	22	0	26.5	41.0	14.5	0

Conditioner: \_\_\_\_\_  
 Type In or Select One  
 TransferType: \_\_\_\_\_  
 Type In or Select One

Start	Stop	Loads	Speed	Crossed	Start	End	Feet	T.Oil
1	2L 2R	0	30	0	41.0	33.0	-8.0	0
2	9L 9R	4	18	92	33.0	22.8	-10.2	4600
3	8L 8R	5	18	125	22.8	10.1	-12.7	6250
4	2L 2R	1	18	37	10.1	7.6	-2.5	1850
5	2L 2R	0	18	0	7.6	0.0	-7.6	0

Conditioner:  
Type In or Select One

TransferType:  
Type In or Select One

Forward



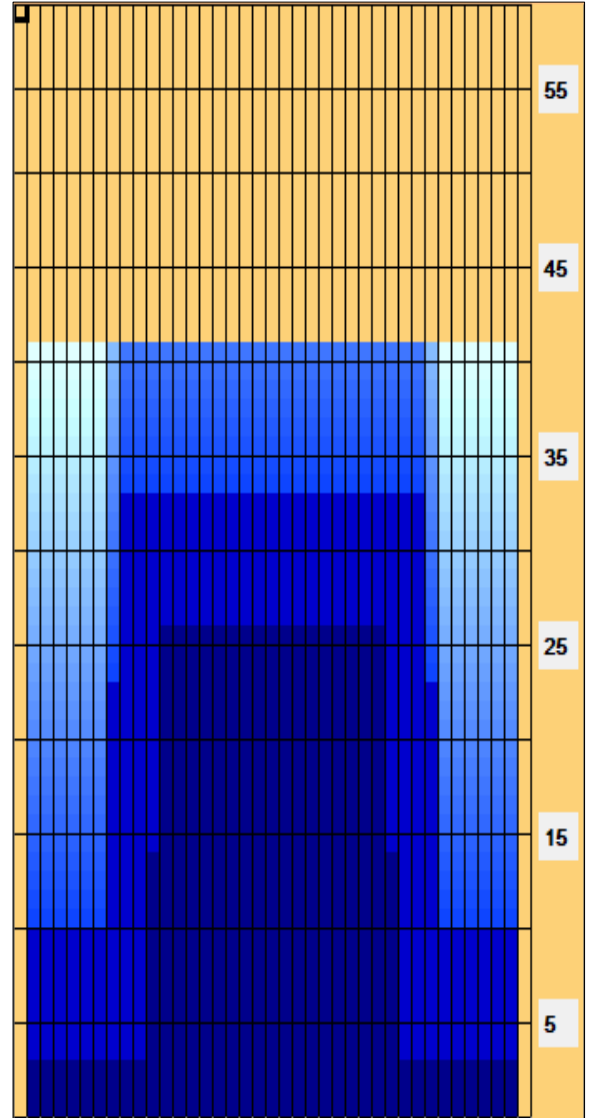
Reverse



Combined



Buff



Item	3L-7L:18L-18R	8L-12L:18L-18R	13L-17L:18L-18R	18L-18R:17R-13R	18L-18R:12R-8R	18L-18R:7R-3R
Description	Outside Track:Middle	Middle Track:Middle	Inside Track:Middle	Middle: Inside Track	Middle:Middle Track	Middle:Outside Track
Track Zone Ratio	5.25	1.44	1	1	1.44	5.25

