

Modified Bourbon Street (Transfer Brush)

Friday, March 3rd Boys Singles



Oil Pattern Distance: **38 Feet** Reverse Brush: **35 Feet** Oil Per: **50 uL**
 Forward Oil Total: **17.45 mL** Reverse Oil: **7.85 mL** Volume Oil Total: **25.3 mL**
 Forward Boards Crossed: **349 Boards** Reverse Boards Crossed: **157 Boards** Total Boards Crossed: **506 Boards**

	Start	Stop	Loads	Speed	Crossed	Start	End	Feet	T.Oil
1	2L	2R	4	14	148	0.0	5.9	5.9	7400
2	9L	9R	1	18	23	5.9	8.4	2.5	1150
3	10L	10R	3	18	63	8.4	16.0	7.6	3150
4	11L	11R	3	18	57	16.0	23.6	7.6	2850
5	13L	13R	3	18	45	23.6	31.2	7.6	2250
6	14L	14R	1	22	13	31.2	34.3	3.1	650
7	2L	2R	0	26	0	34.3	38.0	3.7	0

Navigation: Forward Reverse More

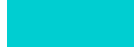
	Start	Stop	Loads	Speed	Crossed	Start	End	Feet	T.Oil
1	2L	2R	0	22	0	38.0	32.0	-6.0	0
2	14L	14R	1	22	13	32.0	28.9	-3.1	650
3	13L	13R	3	18	45	28.9	21.3	-7.6	2250
4	11L	11R	3	18	57	21.3	13.7	-7.6	2850
5	10L	10R	2	14	42	13.7	9.8	-3.9	2100
6	2L	2R	0	10	0	9.8	0.0	-9.8	0

Navigation: Forward Reverse More

Conditioner:
Type In or Select One

TransferType:
Type In or Select One

Forward



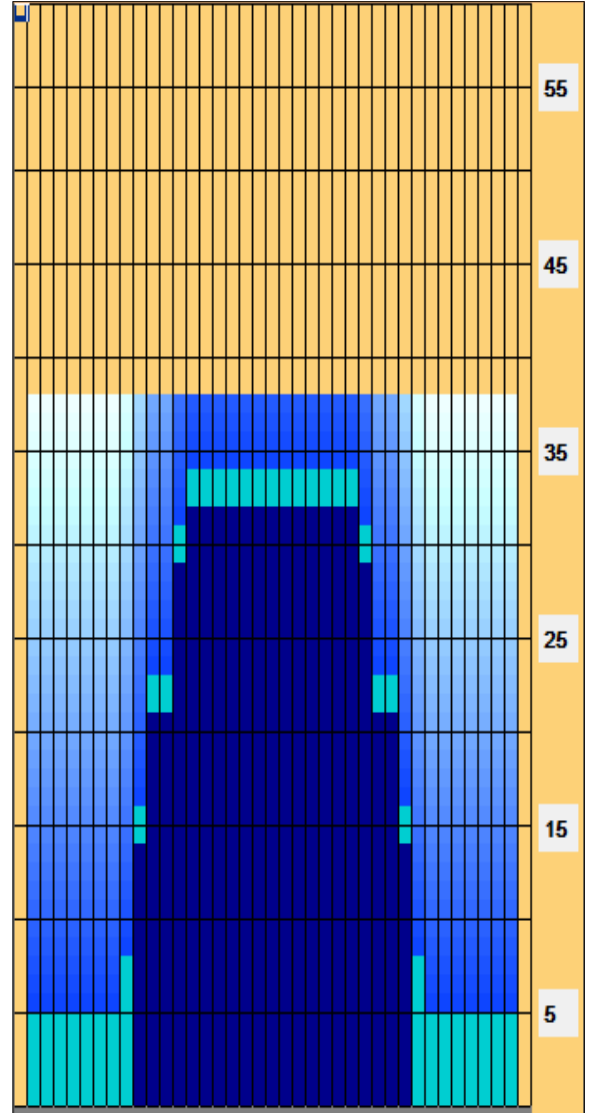
Reverse



Combined



Buff



Reverse drop brush at 34'

Item	3L-7L:18L-18R	8L-12L:18L-18R	13L-17L:18L-18R	18L-18R:17R-13R	18L-18R:12R-8R	18L-18R:7R-3R
Description	Outside Track:Middle	Middle Track:Middle	Inside Track:Middle	Middle:Inside Track	Middle:Middle Track	Middle:Outside Track
Track Zone Ratio	6	2.35	1.02	1.02	2.35	6

