



# 2016 EASTERN PA CHAMPIONSHIPS

Team Event (Saturday, March 5<sup>th</sup>)

{Modified Yellow Brick Road}



Oil Pattern Distance:	39 Feet	Reverse Brush Drop:	30 Feet	Oil Per Board:	40 uL
Forward Oil Total:	16.6 mL	Reverse Oil Total:	6.24 mL	Volume Oil Total:	22.84 mL
Forward Boards Crossed:	415 Boards	Reverse Boards Crossed:	156 Boards	Total Boards Crossed:	571 Boards

	Start	Stop	Loads	Speed	Crossed	Start	End	Feet	T.Oil
1	2L	2R	4	14	148	0.0	5.9	5.9	5920
2	8L	8R	1	14	25	5.9	7.8	1.9	1000
3	9L	9R	2	14	46	7.8	11.7	3.9	1840
4	10L	10R	3	14	63	11.7	17.6	5.9	2520
6	10L	10R	2	18	42	17.6	22.7	5.1	1680
6	11L	11R	3	18	57	22.7	30.3	7.6	2280
7	12L	12R	2	18	34	30.3	35.4	5.1	1360
8	2L	2R	0	22	0	35.4	39.0	3.6	0

Forward Reverse More

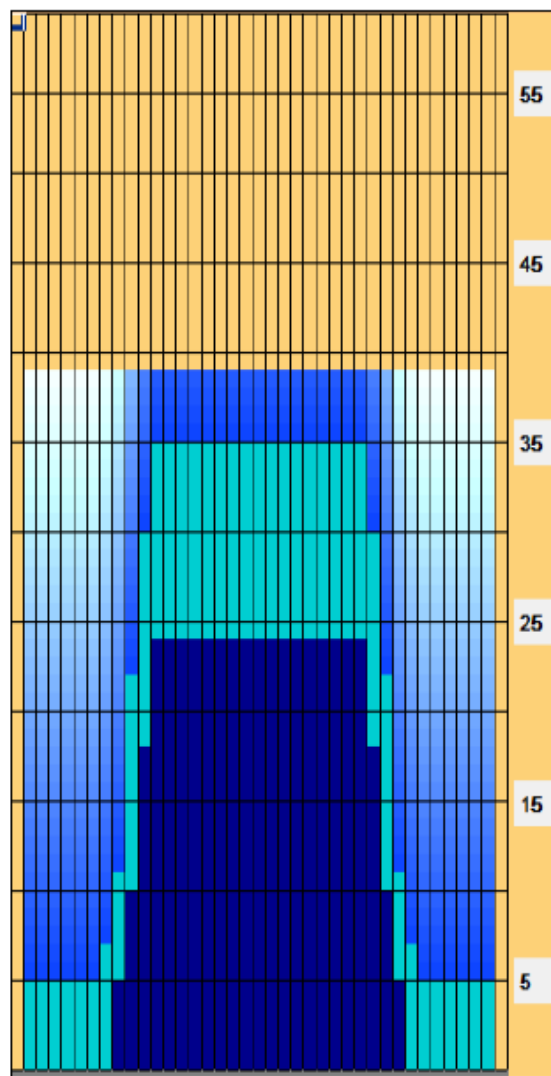
	Start	Stop	Loads	Speed	Crossed	Start	End	Feet	T.Oil
1	2L	2R	0	26	0	39.0	24.0	-15.0	0
2	12L	12R	2	22	34	24.0	17.8	-6.2	1360
3	11L	11R	3	18	57	17.8	10.2	-7.6	2280
4	10L	10R	2	18	42	10.2	5.1	-5.1	1680
6	9L	9R	1	14	23	5.1	3.2	-1.9	920
6	2L	2R	0	14	0	3.2	0.0	-3.2	0

Forward Reverse More

Conditioner:  
Type In or Select One

TransferType:  
Transfer Roller

- Forward
- Reverse
- Combined
- Buff



Item	3L-7L:18L-18R	8L-12L:18L-18R	13L-17L:18L-18R	18L-18R:17R-13R	18L-18R:12R-8R	18L-18R:7R-3R
Description	Outside Track:Middle	Middle Track:Middle	Inside Track:Middle	Middle: Inside Track	Middle:Middle Track	Middle:Outside Track
Track Zone Ratio	6.25	1.69	1	1	1.69	6.25

