

# 2012 Regionals Team



<b>Oil Pattern Distance:</b>	<b>41 Feet</b>	<b>Reverse Brush Drop:</b>	<b>41 Feet</b>	<b>Oil Per Board:</b>	<b>40 uL</b>
<b>Forward Oil Total:</b>	<b>12.04 mL</b>	<b>Reverse Oil Total:</b>	<b>7.76 mL</b>	<b>Volume Oil Total:</b>	<b>19.8 mL</b>
<b>Forward Boards Crossed:</b>	<b>301 Boards</b>	<b>Reverse Boards Crossed:</b>	<b>194 Boards</b>	<b>Total Boards Crossed:</b>	<b>495 Boards</b>

	Start	Stop	Loads	Speed	Crossed	Start	End	Feet	T.Oil	
1	2L	2R	3	18	111	0	5.1	5.1	4440	
2	9L	9R	1	18	23	5.1	7.6	2.5	920	
3	10L	10R	3	18	63	7.6	15.2	7.6	2520	
4	11L	11R	3	22	57	15.2	24.5	9.3	2280	
5	12L	12R	1	22	17	24.5	27.6	3.1	680	
6	13L	13R	2	22	30	27.6	33.8	6.2	1200	
7	2L	2R	0	26	0	33.8	41	7.2	0	

Conditioner:  
Type In or Select  
One

TransferType:  
Type In or Select  
One

Forward



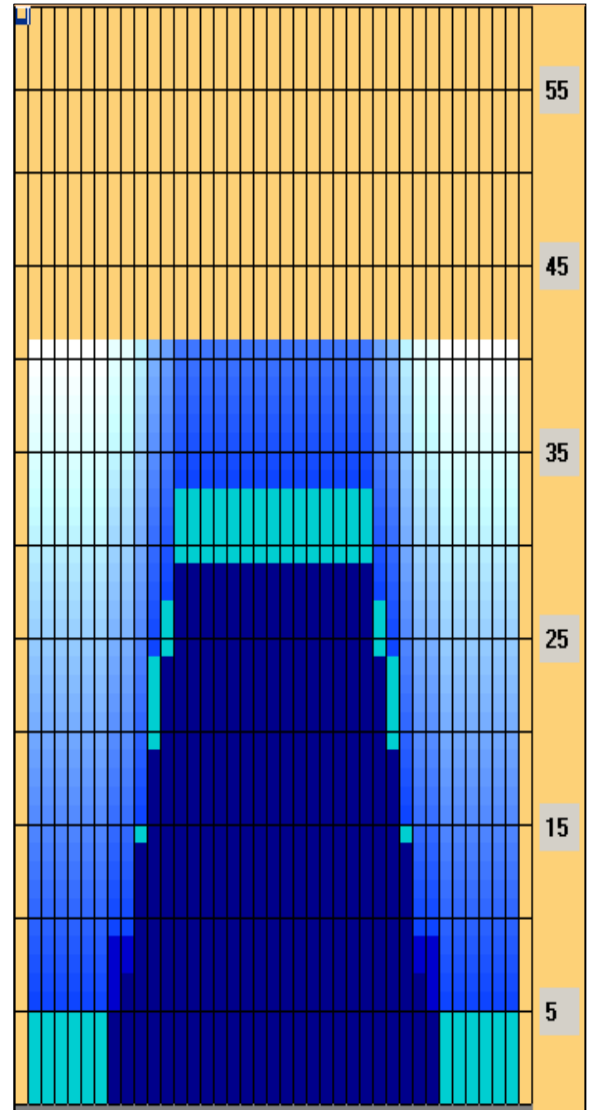
Reverse



Combined



Buff



Forward Reverse More

	Start	Stop	Loads	Speed	Crossed	Start	End	Feet	T.Oil	
1	2L	2R	0	30	0	41	29	-12	0	
2	13L	13R	2	18	30	29	23.9	-5.1	1200	
3	12L	12R	2	18	34	23.9	18.8	-5.1	1360	
4	11L	11R	2	18	38	18.8	13.7	-5.1	1520	
5	10L	10R	2	18	42	13.7	8.6	-5.1	1680	
6	8L	8R	1	18	25	8.6	6.1	-2.5	1000	
7	8L	8R	1	14	25	6.1	4.2	-1.9	1000	
8	2L	2R	0	18	0	4.2	0	-4.2	0	

Forward Reverse More

Item	3L-7L:18L-18R	8L-12L:18L-18R	13L-17L:18L-18R	18L-18R:17R-13R	18L-18R:12R-8R	18L-18R:7R-3R
Description	Outside Track:Middle	Middle Track:Middle	Inside Track:Middle	Middle: Inside Track	Middle:Middle Track	Middle:Outside Track
Track Zone Ratio	7.67	2.02	1	1	2.02	7.67

