

2013 District 3 Championships



Oil Pattern Distance: 39 Feet **Reverse Brush Drop:** 39 Feet **Oil Per Board:** 40 uL
Forward Oil Total: 11.72 mL **Reverse Oil Total:** 5.92 mL **Volume Oil Total:** 17.64 mL
Forward Boards Crossed: 293 Boards **Reverse Boards Crossed:** 148 Boards **Total Boards Crossed:** 441 Boards

	Start	Stop	Loads	Speed	Crossed	Start	End	Feet	T.Oil
1	2L	2R	2	14	74	0	1.9	1.9	2960
2	8L	8R	1	14	25	1.9	3.8	1.9	1000
3	9L	9R	2	14	46	3.8	7.7	3.9	1840
4	10L	10R	2	14	42	7.7	11.6	3.9	1680
5	11L	11R	3	14	57	11.6	17.5	5.9	2280
6	12L	12R	2	18	34	17.5	22.6	5.1	1360
7	13L	13R	1	18	15	22.6	25.1	2.5	600
8	2L	2R	0	22	0	25.1	32	6.9	0
9	2L	2R	0	26	0	32	39	7	0

Conditioner:
Type In or Select One

TransferType:
Type In or Select One

Forward



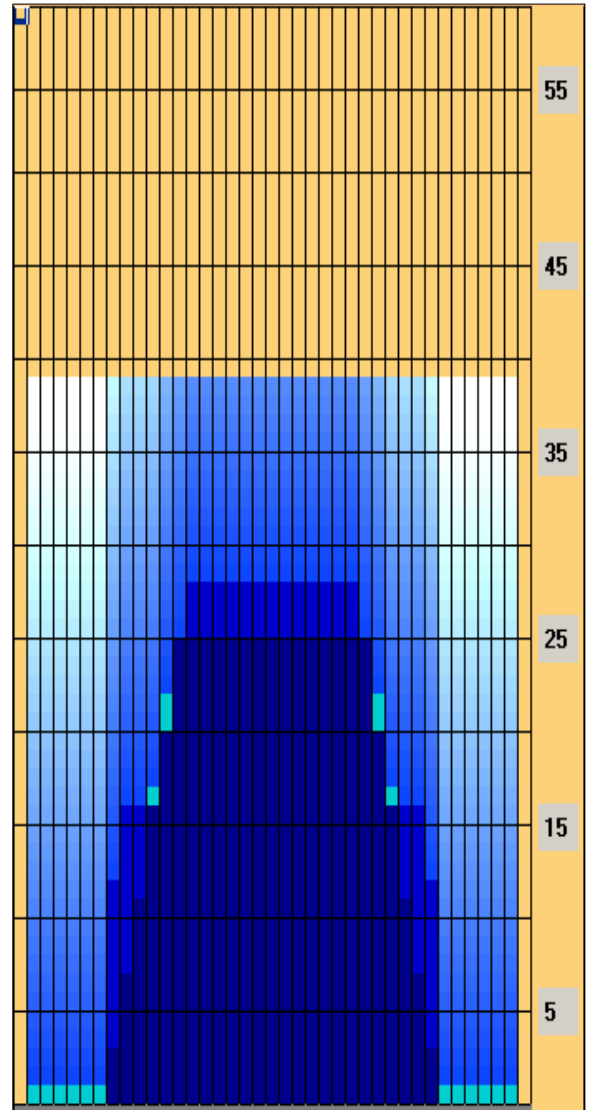
Reverse



Combined



Buff



	Start	Stop	Loads	Speed	Crossed	Start	End	Feet	T.Oil
1	2L	2R	0	30	0	39	28	-11	0
2	14L	14R	1	22	13	28	24.9	-3.1	520
3	13L	13R	2	18	30	24.9	19.8	-5.1	1200
4	12L	12R	2	14	34	19.8	15.9	-3.9	1360
5	9L	9R	2	14	46	15.9	12	-3.9	1840
6	8L	8R	1	14	25	12	10.1	-1.9	1000
7	2L	2R	0	18	0	10.1	0	-10.1	0

Item	3L-7L:18L-18R	8L-12L:18L-18R	13L-17L:18L-18R	18L-18R:17R-13R	18L-18R:12R-8R	18L-18R:7R-3R
Description	Outside Track:Middle	Middle Track:Middle	Inside Track:Middle	Middle: Inside Track	Middle:Middle Track	Middle:Outside Track
Track Zone Ratio	10.5	2.02	1.01	1.01	2.02	10.5

