



# Kegel Big Ben v2



Oil Pattern Distance: **43 Feet**  
 Forward Oil Total: **15.3 mL**  
 Forward Boards Crossed: **306 Boards**

Reverse Brush Drop: **39 Feet**  
 Reverse Oil Total: **10.8 mL**  
 Reverse Boards Crossed: **216 Boards**

Oil Per Board: **50 uL**  
 Volume Oil Total: **26.1 mL**  
 Total Boards Crossed: **522 Boards**

Start	Stop	Loads	Speed	Crossed	Start	End	Feet	T.Oil
1	2L 2R	2	14	74	0.0	1.9	1.9	3700
2	9L 9R	2	14	46	1.9	5.8	3.9	2300
3	10L 10R	3	18	63	5.8	13.4	7.6	3150
4	11L 11R	3	18	57	13.4	21.0	7.6	2850
5	12L 12R	3	18	51	21.0	28.6	7.6	2550
6	13L 13R	1	18	15	28.6	31.1	2.5	750
7	2L 2R	0	22	0	31.1	39.0	7.9	0
8	2L 2R	0	26	0	39.0	43.0	4.0	0

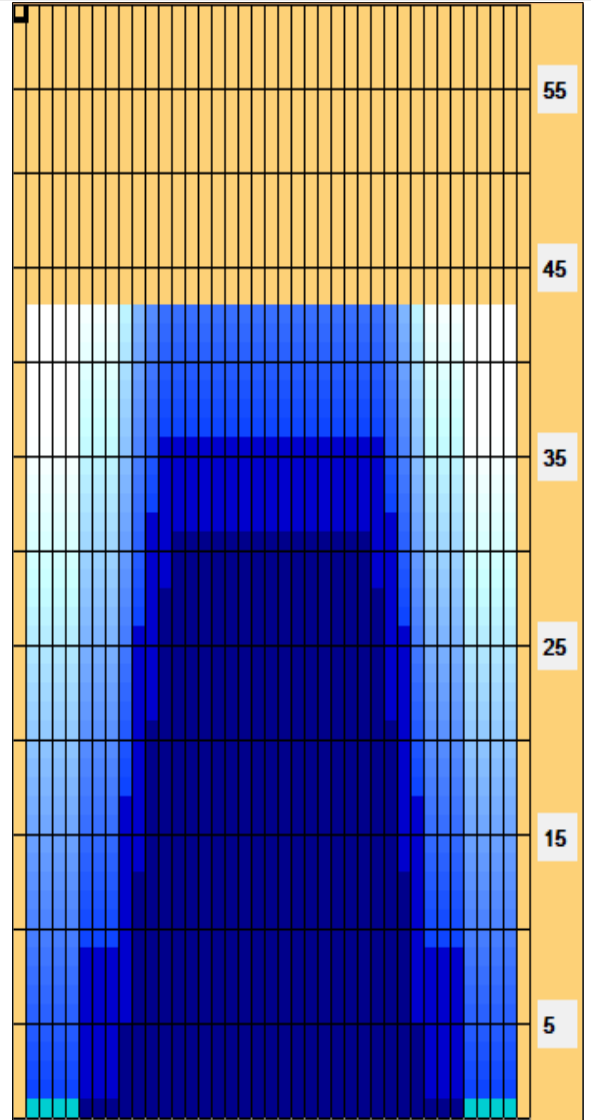
Navigation: Forward Reverse More

Start	Stop	Loads	Speed	Crossed	Start	End	Feet	T.Oil
1	2L 2R	0	30	0	43.0	36.0	-7.0	0
2	12L 12R	1	26	17	36.0	32.4	-3.6	850
3	11L 11R	2	22	38	32.4	26.2	-6.2	1900
4	10L 10R	3	22	63	26.2	16.9	-9.3	3150
5	9L 9R	3	18	69	16.9	9.3	-7.6	3450
6	6L 6R	1	14	29	9.3	7.4	-1.9	1450
7	2L 2R	0	14	0	7.4	0.0	-7.4	0

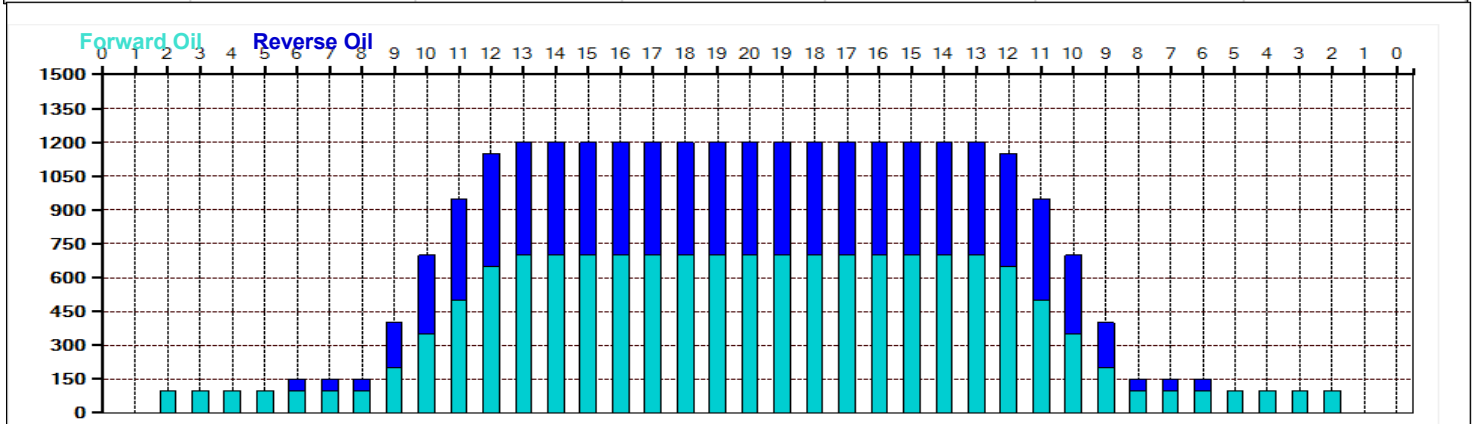
Navigation: Forward Reverse More

Conditioner:  
Type In or Select One  
 TransferType:  
Type In or Select One

- Forward
- Reverse
- Combined
- Buff



Item	3L-7L:18L-18R	8L-12L:18L-18R	13L-17L:18L-18R	18L-18R:17R-13R	18L-18R:12R-8R	18L-18R:7R-3R
Description	Outside Track:Middle	Middle Track:Middle	Inside Track:Middle	Middle: Inside Track	Middle:Middle Track	Middle:Outside Track
Track Zone Ratio	10	1.79	1	1	1.79	10





# Modified Wall Street v2



Oil Pattern Distance: **42 Feet**  
 Forward Oil Total: **13.6 mL**  
 Forward Boards Crossed: **272 Boards**

Reverse Brush Drop: **37 Feet**  
 Reverse Oil Total: **11.95 mL**  
 Reverse Boards Crossed: **239 Boards**

Oil Per Board: **50 uL**  
 Volume Oil Total: **25.55 mL**  
 Total Boards Crossed: **511 Boards**

Start	Stop	Loads	Speed	Crossed	Start	End	Feet	T.Oil
1	2L 2R	2	18	74	0.0	2.5	2.5	3700
2	10L 10R	3	18	63	2.5	10.1	7.6	3150
3	10L 10R	4	18	84	10.1	20.3	10.2	4200
4	12L 12R	3	18	51	20.3	27.9	7.6	2550
5	2L 2R	0	22	0	27.9	32.0	4.1	0
6	2L 2R	0	30	0	32.0	42.0	10.0	0

Conditioner: Type In or Select One  
 TransferType: Type In or Select One

Forward  
 Reverse  
 More

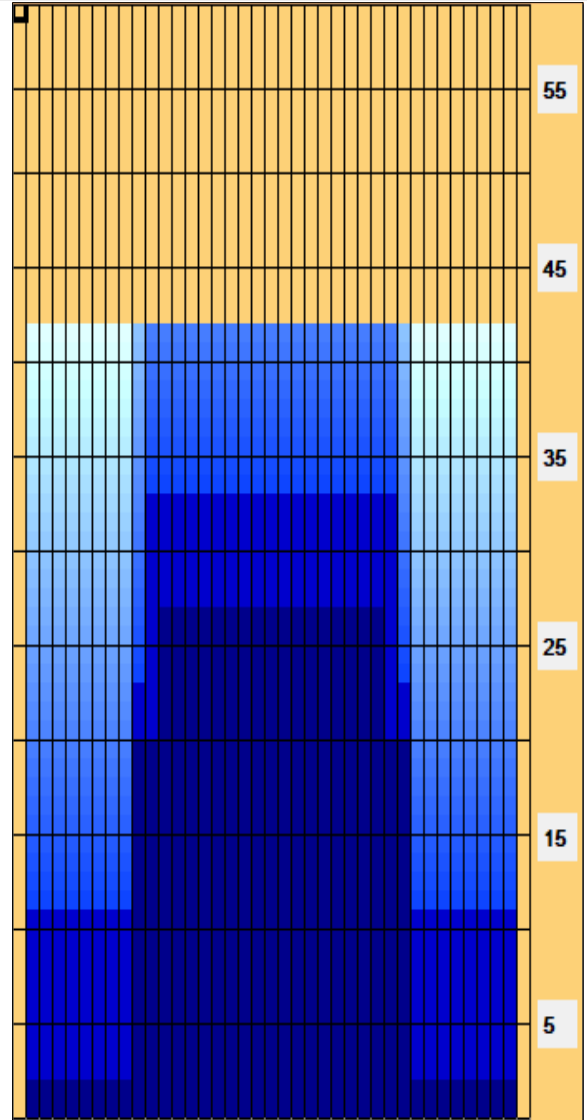
Start	Stop	Loads	Speed	Crossed	Start	End	Feet	T.Oil
1	2L 2R	0	30	0	42.0	33.0	-9.0	0
2	11L 11R	4	18	76	33.0	22.8	-10.2	3800
3	10L 10R	6	14	126	22.8	10.9	-11.9	6300
4	2L 2R	1	14	37	10.9	9.0	-1.9	1850
5	2L 2R	0	14	0	9.0	0.0	-9.0	0

Forward  
 Reverse  
 More

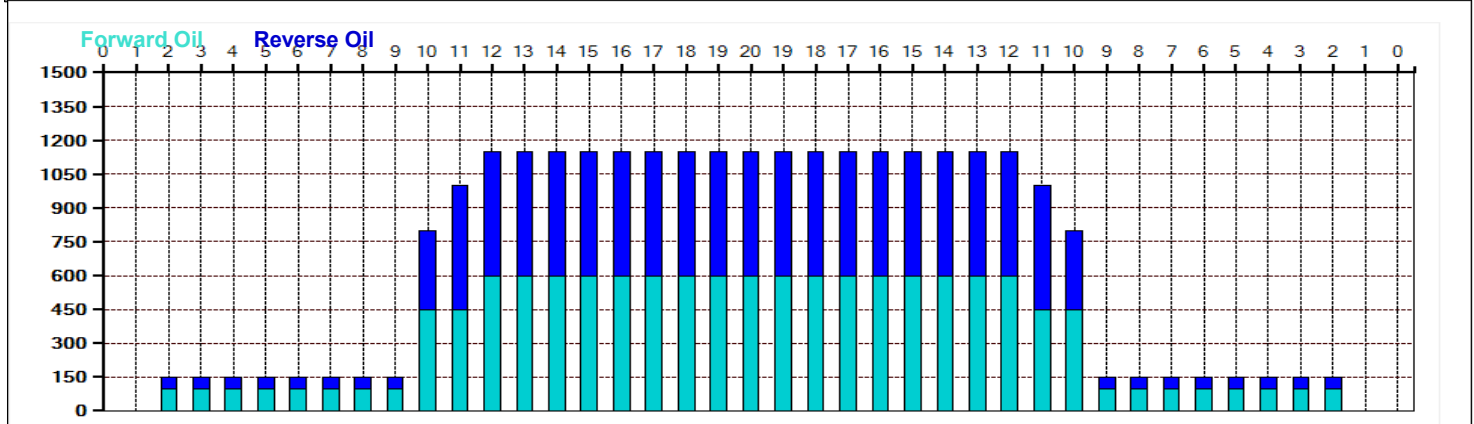
Conditioner:  
Type In or Select One

TransferType:  
Type In or Select One

- Forward
- Reverse
- Combined
- Buff



Item	3L-7L:18L-18R	8L-12L:18L-18R	13L-17L:18L-18R	18L-18R:17R-13R	18L-18R:12R-8R	18L-18R:7R-3R
Description	Outside Track:Middle	Middle Track:Middle	Inside Track:Middle	Middle: Inside Track	Middle:Middle Track	Middle:Outside Track
Track Zone Ratio	7.67	1.77	1	1	1.77	7.67





# Kegel Stone Street



Oil Pattern Distance: **42 Feet**  
 Forward Oil Total: **11.5 mL**  
 Forward Boards Crossed: **230 Boards**

Reverse Brush Drop: **38 Feet**  
 Reverse Oil Total: **11.65 mL**  
 Reverse Boards Crossed: **233 Boards**

Oil Per Board: **50 uL**  
 Volume Oil Total: **23.15 mL**  
 Total Boards Crossed: **463 Boards**

Start	Stop	Loads	Speed	Crossed	Start	End	Feet	T.Oil
1	2L 2R	2	14	74	0.0	1.9	1.9	3700
2	9L 9R	1	14	23	1.9	3.8	1.9	1150
3	10L 10R	2	18	42	3.8	8.9	5.1	2100
4	11L 11R	3	18	57	8.9	16.5	7.6	2850
5	12L 12R	2	18	34	16.5	21.6	5.1	1700
6	2L 2R	0	18	0	21.6	34.0	12.4	0
7	2L 2R	0	26	0	34.0	38.0	4.0	0
8	2L 2R	0	30	0	38.0	42.0	4.0	0

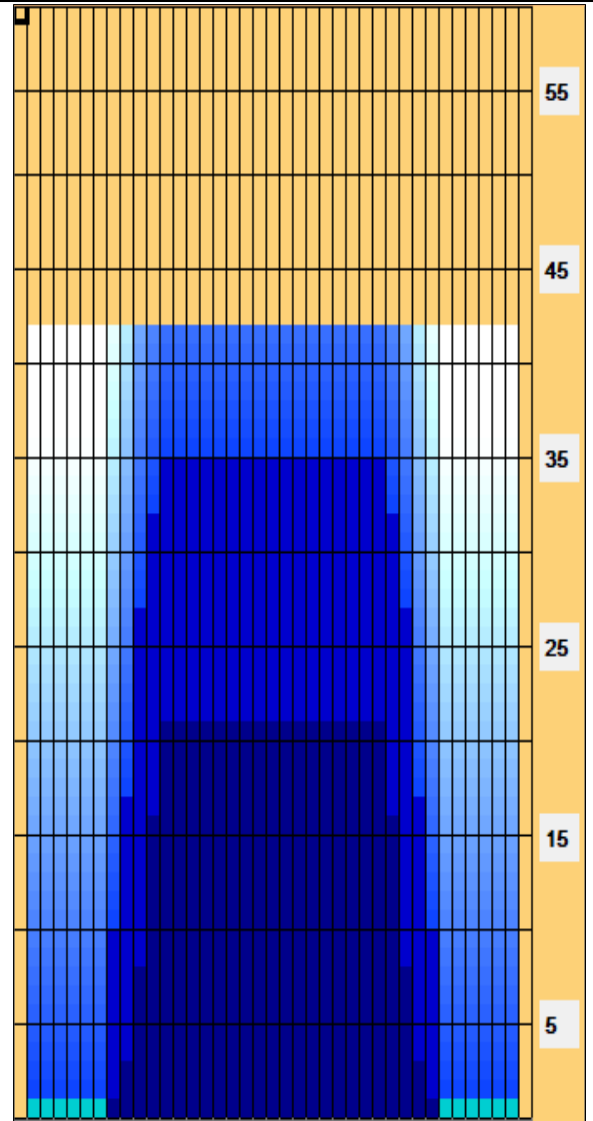
Navigation: Forward Reverse More

Start	Stop	Loads	Speed	Crossed	Start	End	Feet	T.Oil
1	2L 2R	0	30	0	42.0	35.0	-7.0	0
2	12L 12R	1	18	17	35.0	32.5	-2.5	850
3	11L 11R	2	18	38	32.5	27.4	-5.1	1900
4	10L 10R	4	18	84	27.4	17.2	-10.2	4200
5	9L 9R	3	18	69	17.2	9.6	-7.6	3450
6	8L 8R	1	14	25	9.6	7.7	-1.9	1250
7	2L 2R	0	10	0	7.7	0.0	-7.7	0

Navigation: Forward Reverse More

Conditioner:  
Type In or Select One  
 TransferType:  
Type In or Select One

- Forward
- Reverse
- Combined
- Buff



Navigation Series (Recreation)

Item	3L-7L:18L-18R	8L-12L:18L-18R	13L-17L:18L-18R	18L-18R:17R-13R	18L-18R:12R-8R	18L-18R:7R-3R
Description	Outside Track:Middle	Middle Track:Middle	Inside Track:Middle	Middle: Inside Track	Middle:Middle Track	Middle:Outside Track
Track Zone Ratio	10.5	1.69	1	1	1.69	10.5

