

# Easy St (Modified) V2



**Oil Pattern Distance:** 39 Feet      **Reverse Brush Drop:** 39 Feet      **Oil Per Board:** 40 uL  
**Forward Oil Total:** 11.12 mL      **Reverse Oil Total:** 9.16 mL      **Volume Oil Total:** 20.28 mL  
**Forward Boards Crossed:** 278 Boards      **Reverse Boards Crossed:** 229 Boards      **Total Boards Crossed:** 507 Boards

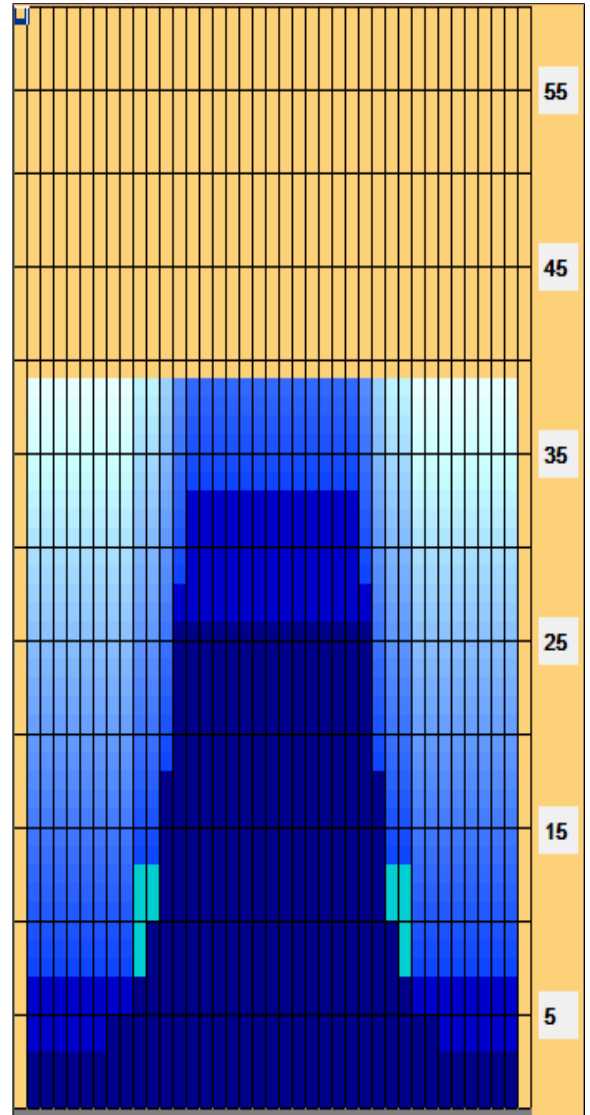
	Start	Stop	Loads	Speed	Crossed	Start	End	Feet	T.Oil
1	2L	2R	3	14	111	0.0	3.9	3.9	4440
2	8L	8R	1	14	25	3.9	5.8	1.9	1000
3	10L	10R	3	18	63	5.8	13.4	7.6	2520
4	12L	12R	2	18	34	13.4	18.5	5.1	1360
5	13L	13R	3	18	45	18.5	26.1	7.6	1800
6	2L	2R	0	22	0	26.1	39.0	12.9	0

	Start	Stop	Loads	Speed	Crossed	Start	End	Feet	T.Oil
1	2L	2R	0	30	0	39.0	33.0	-6.0	0
2	14L	14R	2	18	26	33.0	27.9	-5.1	1040
3	13L	13R	4	18	60	27.9	17.7	-10.2	2400
4	12L	12R	4	14	68	17.7	9.8	-7.9	2720
5	11L	11R	2	10	38	9.8	7.0	-2.8	1520
6	2L	2R	1	10	37	7.0	5.6	-1.4	1480
7	2L	2R	0	10	0	5.6	0.0	-5.6	0

Conditioner:  
Type In or Select One

TransferType:  
Type In or Select One

- Forward
- Reverse
- Combined
- Buff



Item	3L-7L:18L-18R	8L-12L:18L-18R	13L-17L:18L-18R	18L-18R:17R-13R	18L-18R:12R-8R	18L-18R:7R-3R
Description	Outside Track:Middle	Middle Track:Middle	Inside Track:Middle	Middle: Inside Track	Middle:Middle Track	Middle:Outside Track
Track Zone Ratio	6.25	2.84	1.02	1.02	2.84	6.25

