

2013 ICEBREAKER CLASSIC

Modified Kegel Easy Street

Leisure Lanes, Lancaster



Oil Pattern Distance:	39 Feet	Reverse Brush Drop:	36 Feet	Oil Per Board:	50 uL
Forward Oil Total:	9.1 mL	Reverse Oil Total:	11.45 mL	Volume Oil Total:	20.55 mL
Forward Boards Crossed:	182 Boards	Reverse Boards Crossed:	229 Boards	Total Boards Crossed:	411 Boards

	Start	Stop	Loads	Speed	Crossed	Start	End	Feet	T.Oil	S
1	2L	2R	2	14	74	0	1.9	1.9	3700	
2	10L	10R	3	18	63	1.9	9.5	7.6	3150	
3	13L	13R	3	18	45	9.5	17.1	7.6	2250	
4	2L	2R	0	18	0	17.1	24	6.9	0	
5	2L	2R	0	22	0	24	33	9	0	
6	2L	2R	0	30	0	33	39	6	0	

Navigation: Forward Reverse More

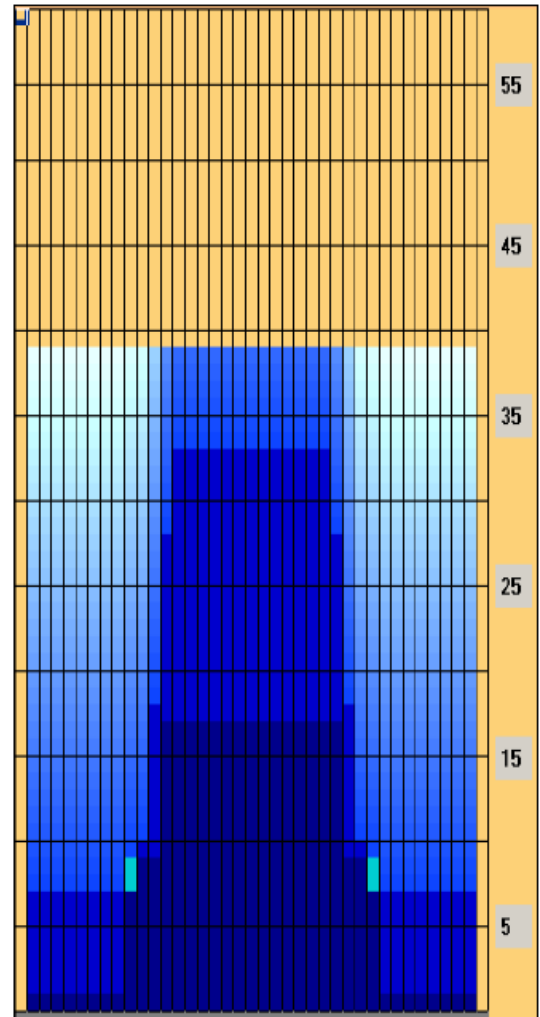
	Start	Stop	Loads	Speed	Crossed	Start	End	Feet	T.Oil	S
1	2L	2R	0	30	0	39	33	-6	0	
2	14L	14R	2	18	26	33	27.9	-5.1	1300	
3	13L	13R	4	18	60	27.9	17.7	-10.2	3000	
4	12L	12R	4	14	68	17.7	9.8	-7.9	3400	
5	11L	11R	2	10	38	9.8	7	-2.8	1900	
6	2L	2R	1	10	37	7	5.6	-1.4	1850	
7	2L	2R	0	10	0	5.6	0	-5.6	0	

Navigation: Forward Reverse More

Conditioner:
Varies

TransferType:
Transfer Brush

- Forward
- Reverse
- Combined
- Buff



This pattern was designed for a **TRANSFER BRUSH** machine. Please note that, even if you have the same machine, same oil, and same cleaner, it does NOT mean that this pattern will play the same in your home bowling center. Lane surface type and lane surface age play a huge role in how a pattern plays and can make a lane pattern play much different from bowling center to bowling center.

Item	3L-7L:18L-18R	8L-12L:18L-18R	13L-17L:18L-18R	18L-18R:17R-13R	18L-18R:12R-8R	18L-18R:7R-3R
Description	Outside Track:Middle	Middle Track:Middle	Inside Track:Middle	Middle: Inside Track	Middle:Middle Track	Middle:Outside Track
Track Zone Ratio	7	3.28	1.02	1.02	3.28	7

