

Team Option #2 – Modified Wall Street

40 uL Transfer Roller



Oil Pattern Distance: 39 Feet **Reverse Brush:** 36 Feet **Oil Per:** 40 uL
Forward Oil Total: 11.52 mL **Reverse Oil:** 9.48 mL **Volume Oil Total:** 21 mL
Forward Boards Crossed: 288 Boards **Reverse Boards Crossed:** 237 Boards **Total Boards Crossed:** 525 Boards

	Start	Stop	Loads	Speed	Crossed	Start	End	Feet	T.Oil
1	2L	2R	3	18	111	0.0	5.1	5.1	4440
2	10L	10R	3	18	63	5.1	12.7	7.6	2520
3	10L	10R	3	18	63	12.7	20.3	7.6	2520
4	12L	12R	3	18	51	20.3	27.9	7.6	2040
5	2L	2R	0	22	0	27.9	32.0	4.1	0
6	2L	2R	0	30	0	32.0	39.0	7.0	0

	Start	Stop	Loads	Speed	Crossed	Start	End	Feet	T.Oil
1	2L	2R	0	30	0	39.0	33.0	-6.0	0
2	11L	11R	5	22	95	33.0	17.5	-15.5	3800
3	10L	10R	5	18	105	17.5	4.8	-12.7	4200
4	2L	2R	1	14	37	4.8	2.9	-1.9	1480
5	2L	2R	0	14	0	2.9	0.0	-2.9	0

Conditioner:
Type In or Select One

TransferType:
Type In or Select One

Forward



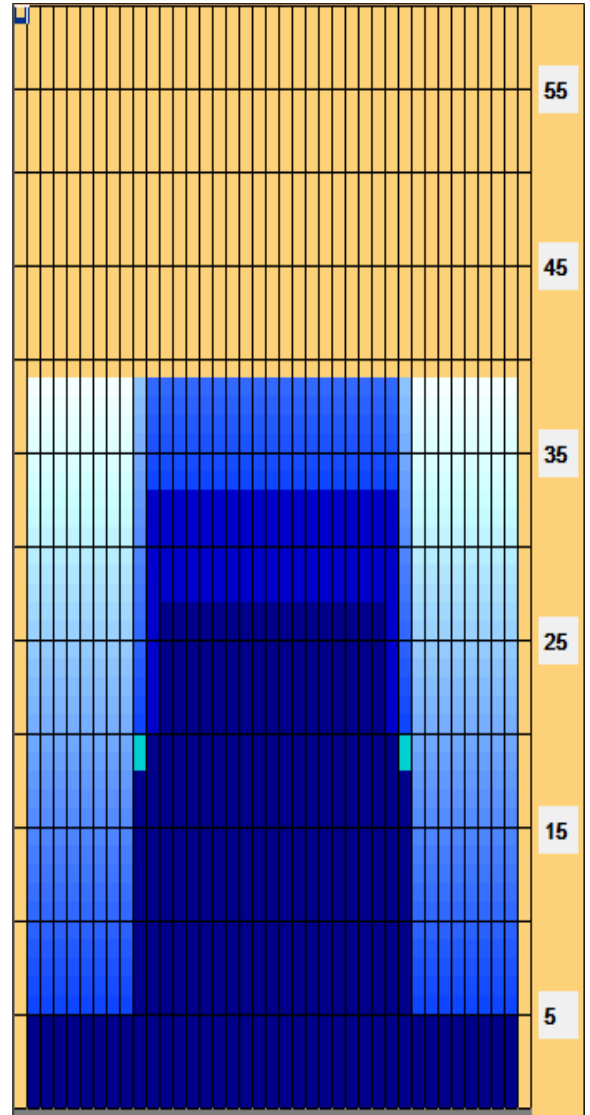
Reverse



Combined



Buff



Item	3L-7L:18L-18R	8L-12L:18L-18R	13L-17L:18L-18R	18L-18R:17R-13R	18L-18R:12R-8R	18L-18R:7R-3R
Description	Outside Track:Middle	Middle Track:Middle	Inside Track:Middle	Middle:Inside Track	Middle:Middle Track	Middle:Outside Track
Track Zone Ratio	5.75	1.74	1	1	1.74	5.75

